

# HERITAGE CLUB

A REPLAT OF THE EAST QUARTER OF LOT 5, BLOCK I, MODEL LAND COMPANY'S  
MAP OF SECTION 21, TOWNSHIP 46 SOUTH, RANGE 43 EAST, SHOWING SUCH DIVISION  
OF THE WEST HALF OF SECTION (PB I, PG I28, P.B.C.R.), LESS THE NORTH 33 FEET THEREOF  
CITY OF DELRAY BEACH, PALM BEACH COUNTY, FLORIDA

SHEET 2 OF 2 SHEETS  
SW CORNER OF THE NW 1/4  
SEC. 21-T 46S-R 43E  
N = 769273.10  
E = 959486.50  
SWINTON AVENUE  
WEST LINE  
SEC. 21-46-43  
SOUTH LINE NW 1/4  
SEC. 21-46-43

# 153

STATE OF FLORIDA  
COUNTY OF PALM BEACH  
This Plat was filed for record  
at \_\_\_\_\_ M., this \_\_\_\_\_ day  
of \_\_\_\_\_, 200\_\_\_\_ and duly  
recorded in Plat Book No. \_\_\_\_\_  
on Pages \_\_\_\_\_ and \_\_\_\_\_  
DOROTHY H. WILKEN, CLERK  
BY: \_\_\_\_\_ DC

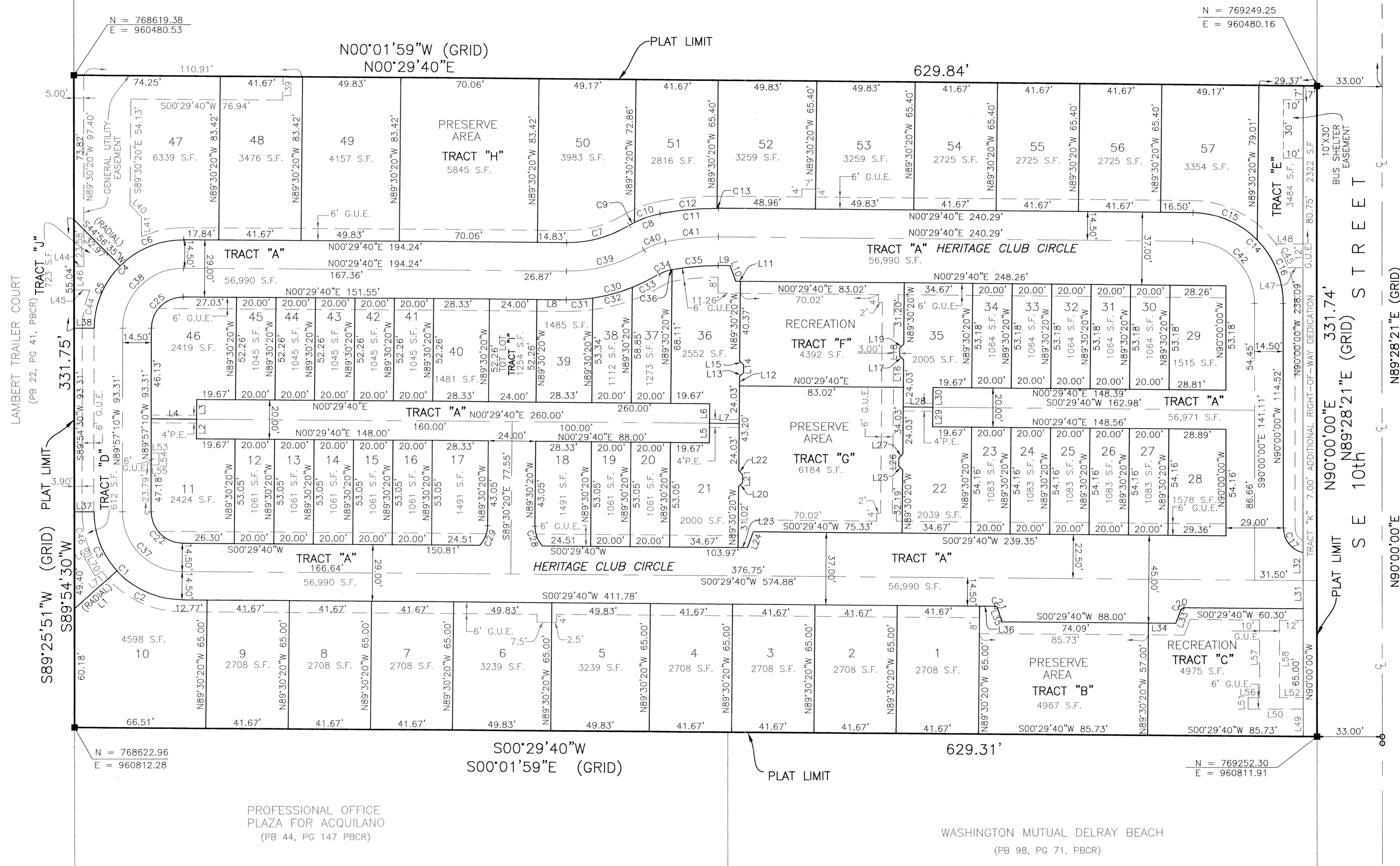
DELRAY PLACE CONDOMINIUM  
PHASE 1 AND 2  
(PB 23, PG 174, PBCR)

LINE TABLE

NUMBER	DIRECTION	DISTANCE
L1	N42°01'00"W	28.74'
L2	N89°30'20"W	10.00'
L3	N89°30'20"W	10.00'
L4	S00°29'40"W	23.00'
L5	N89°30'20"W	10.00'
L6	N89°30'20"W	10.00'
L7	N00°29'40"E	15.00'
L8	N00°29'40"E	14.87'
L9	N00°29'40"E	6.05'
L10	N70°29'40"E	8.51'
L11	N00°29'40"E	2.30'
L12	N89°30'20"W	4.86'
L13	N44°30'20"W	2.83'
L14	N89°30'20"W	3.94'
L15	S45°29'40"W	2.83'
L16	N89°30'20"W	14.03'
L17	S45°29'40"W	2.83'
L18	N89°30'20"W	3.94'
L19	N44°30'20"W	2.83'
L20	N44°30'20"W	2.83'
L21	N89°30'20"W	3.94'
L22	S45°29'40"W	2.83'
L23	S00°29'40"W	4.79'
L24	N69°30'20"W	8.51'
L25	S45°29'40"W	2.83'
L26	N89°30'20"W	3.94'
L27	N44°30'20"W	2.83'
L28	N00°29'40"E	15.00'
L29	N89°30'20"W	10.00'
L30	N89°30'20"W	10.00'
L31	N90°00'00"W	14.50'
L32	N90°00'00"W	14.15'
L33	S69°30'20"E	7.46'
L34	S00°29'40"W	13.91'
L35	S70°29'40"W	7.46'
L36	N00°29'40"E	7.68'
L37	S00°02'50"W	9.86'
L38	S00°02'50"W	10.09'
L39	S89°30'20"W	12.00'
L40	N45°29'40"E	8.35'
L41	S89°57'10"E	10.08'
L42	S00°29'40"W	4.00'
L43	S00°29'40"W	7.96'
L44	S89°54'30"W	12.02'
L45	S00°29'59"W	7.30'
L46	N00°29'59"E	13.73'
L47	N90°00'00"W	14.09'
L48	S00°00'00"W	27.82'
L49	N90°00'00"W	6.00'
L50	N00°00'00"E	27.82'
L51	N00°02'50"E	4.00'
L52	S89°57'10"E	6.00'
L53	S00°02'50"W	12.00'
L54	N00°00'00"E	5.82'
L55	N90°00'00"W	39.11'
L56	N90°00'00"W	39.02'
L57	S25°08'41"E	4.00'
L58	(RADIAL)	
L59	N59°13'44"E	10.78'
L60	N36°23'50"W	4.00'
L61	(RADIAL)	
L62	(RADIAL)	
L63	(RADIAL)	
L64	(RADIAL)	
L65	(RADIAL)	
L66	(RADIAL)	
L67	(RADIAL)	
L68	(RADIAL)	
L69	(RADIAL)	
L70	(RADIAL)	
L71	(RADIAL)	

CURVE TABLE

NUMBER	DELTA ANGLE	RADIUS	ARC LENGTH
C1	89°33'10"	45.00'	70.33'
C2	47°29'20"	45.00'	37.30'
C3	42°03'50"	45.00'	33.04'
C4	90°26'50"	45.00'	71.04'
C5	44°54'35"	45.00'	35.27'
C6	45°32'15"	45.00'	35.77'
C7	31°44'50"	60.00'	33.25'
C8	20°33'34"	47.00'	16.87'
C9	03°52'54"	47.00'	3.18'
C10	16°40'40"	47.00'	13.68'
C11	11°11'16"	153.00'	29.88'
C12	10°51'46"	153.00'	29.01'
C13	00°19'30"	153.00'	0.87'
C14	89°30'20"	46.00'	71.86'
C15	45°15'04"	46.00'	36.33'
C16	44°15'16"	46.00'	35.53'
C17	76°39'25"	13.00'	17.39'
C18	70°00'00"	1.50'	1.83'
C19	70°00'00"	1.50'	1.83'
C20	89°33'10"	16.00'	25.01'
C21	90°26'50"	16.00'	25.26'
C22	41°48'37"	15.00'	10.95'
C23	41°48'37"	15.00'	10.95'
C24	31°44'50"	89.00'	49.31'
C25	08°42'01"	89.00'	13.51'
C26	13°23'06"	89.00'	20.79'
C27	09°39'43"	89.00'	15.01'
C28	20°33'34"	18.00'	6.46'
C29	11°11'16"	124.00'	24.21'
C30	00°18'29"	124.00'	0.67'
C31	89°33'10"	30.50'	47.67'
C32	90°26'50"	30.50'	48.15'
C33	31°44'50"	74.50'	41.28'
C34	22°19'13"	31.50'	49.21'
C35	15°08'01"	52.00'	13.70'
C36	25°11'31"	51.00'	22.42'



THIS INSTRUMENT PREPARED BY:  
MICHAEL D. ROSE, P.S.M.

**SDA** SHAH DROTOS & ASSOCIATES  
ENGINEERING SURVEYING PLANNING

CERTIFICATE OF AUTHORIZATION NO. LB6456  
1835 S. Perimeter Road • Suite 190 • Ft. Lauderdale, FL 33309  
PH: 954-776-7604 • FAX: 954-776-7608

APRIL, 2003

AREA TABLE

TRACT "A"	56,990 S.F.	TRACT "H"	5,845 S.F.
TRACT "B"	4,967 S.F.	TRACT "I"	1,254 S.F.
TRACT "C"	4,975 S.F.	TRACT "J"	723 S.F.
TRACT "D"	612 S.F.	TRACT "K"	2,322 S.F.
TRACT "E"	3,484 S.F.	57 LOTS	117,102 S.F.
TRACT "F"	4,392 S.F.		
TRACT "G"	6,184 S.F.	TOTAL AREA	208,850 S.F.